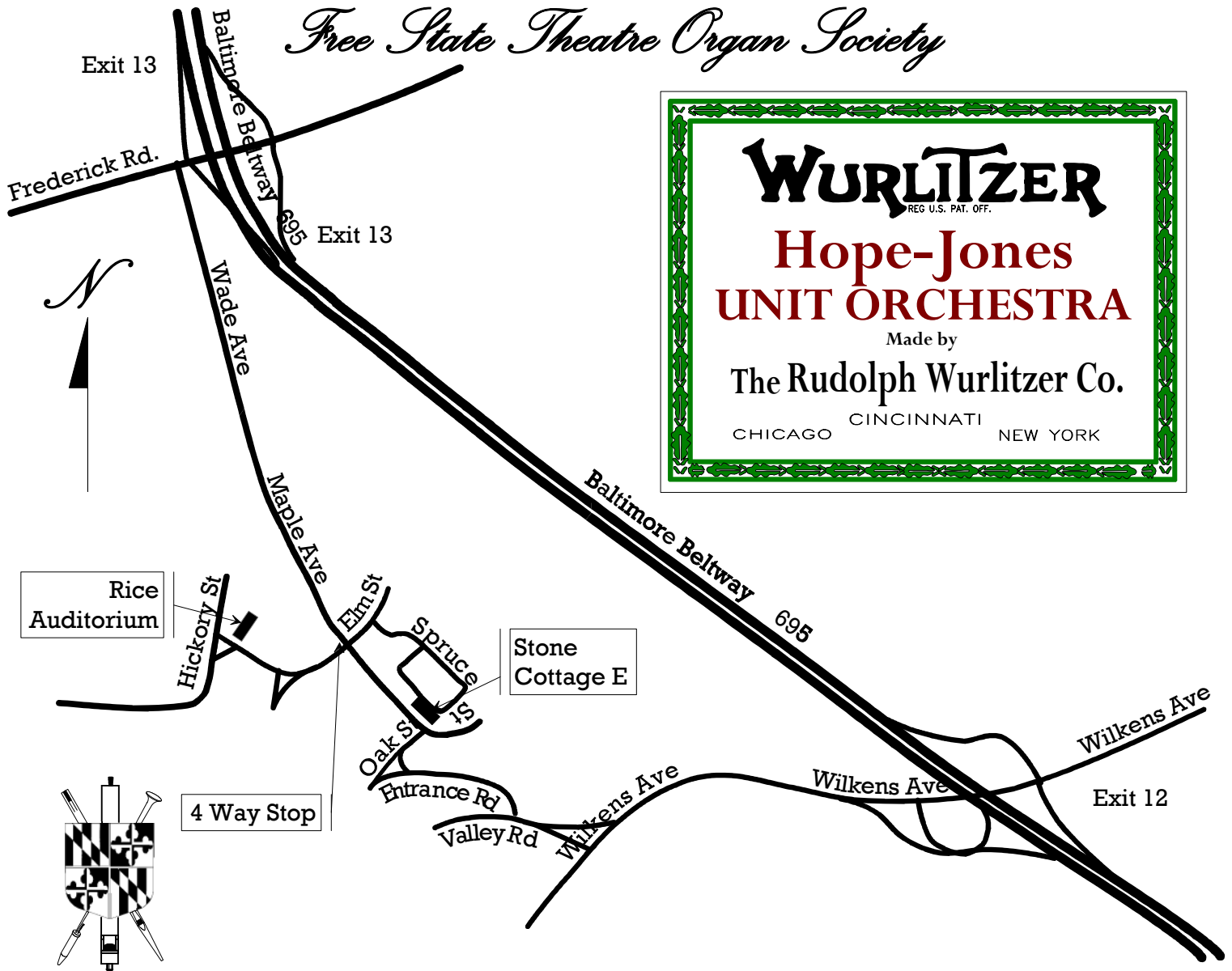
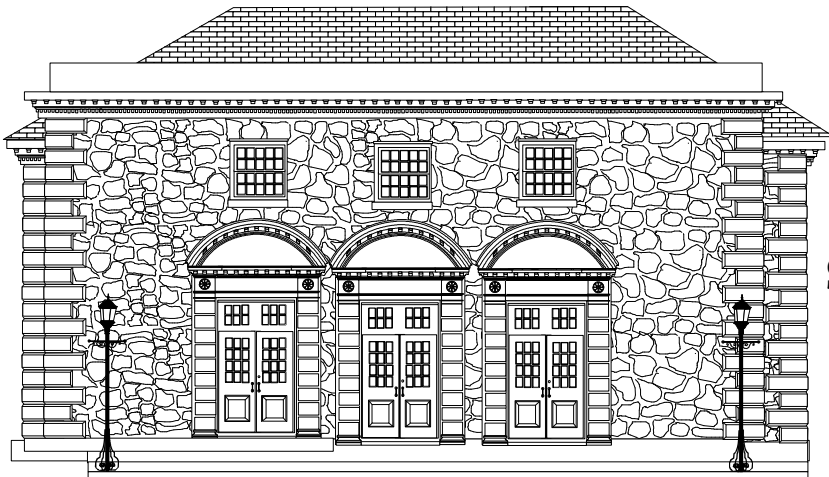


Free State Theatre Organ Society



From the Baltimore Beltway (I-695) Take exit 13 (Frederick Road) from the beltway. Wade Avenue is almost adjacent to the south bound off-ramp of the beltway. Stay on Wade Ave. for about three blocks. Look for the intersection with a 4-way stop sign. Turn right on Elm Street and follow it past the flagpole. You will see the Rice Auditorium on the right. There is parking to the left and right sides of the auditorium.



Rice Auditorium
at
Spring Grove Hospital Center
Catonsville, Maryland