

Hammond Service News

Volume 2 Number 10
January, 1971

Model T, H-300

SUBJECT: DRUM SCANNER

Enclosed is an exploded view of the drum scanner assembly (Figure 1). This view is to let you see how the unit is constructed.

However, it has been recommended by our Engineering Department that the scanner assembly should not be disassembled. Since several parts are coated with Aquadag, finger marks on the Rotor (Item 10), or on the inside of the scanner shell (Item 16), can cause a static buildup which, when reassembled, might cause distortion or excessive noise.

The attached view is one of a double pickup type such as the Celeste or Vibrato as used in the H-300, and also the scanner conversion kit for the H-100.

The T Drum Scanner is only a single pickup. As a result, Item 22 and associated shielded cable are not present. Item 25 is only a cover to close up the unused end.

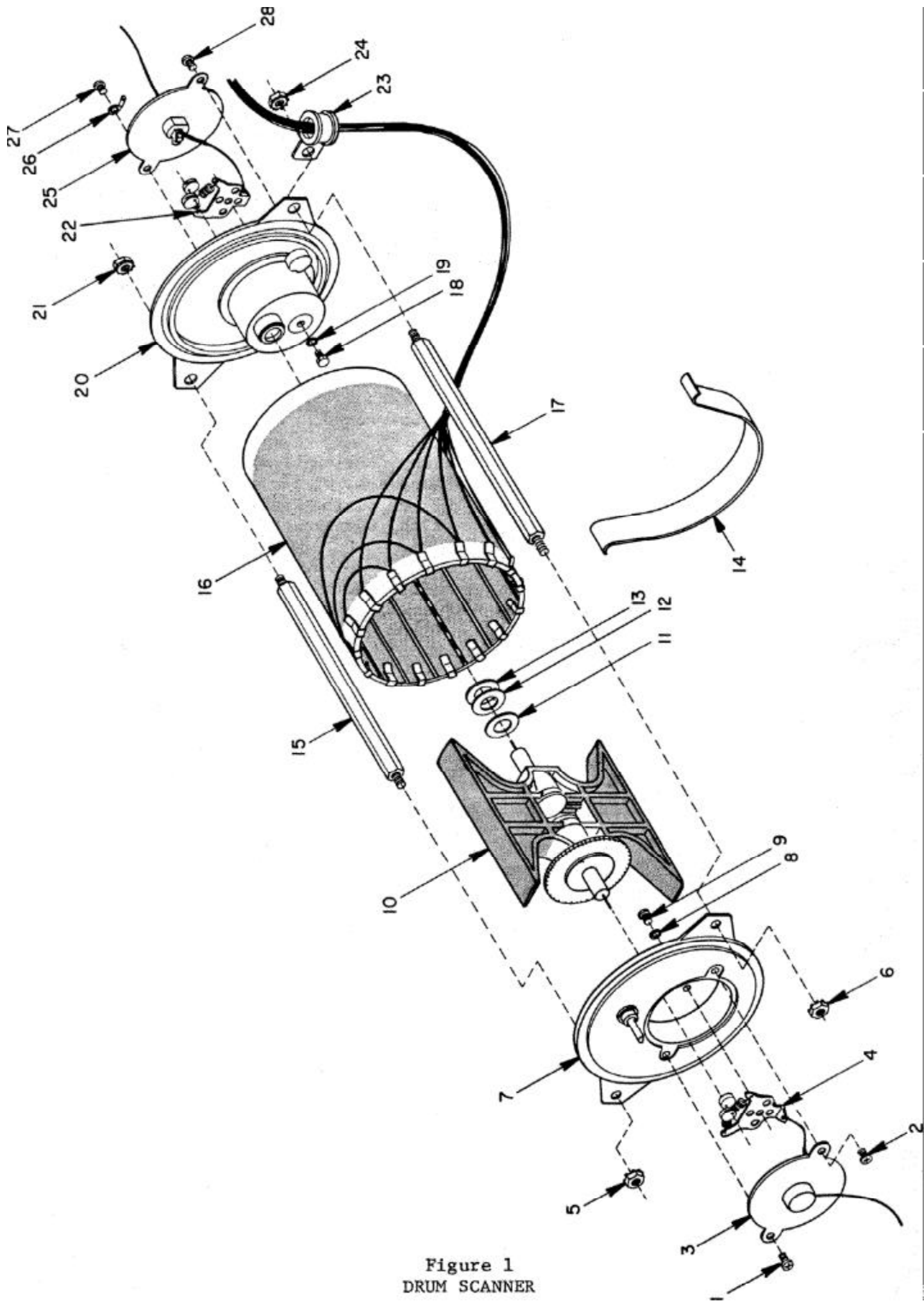


Figure 1
DRUM SCANNER