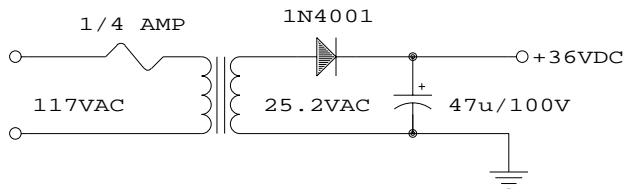
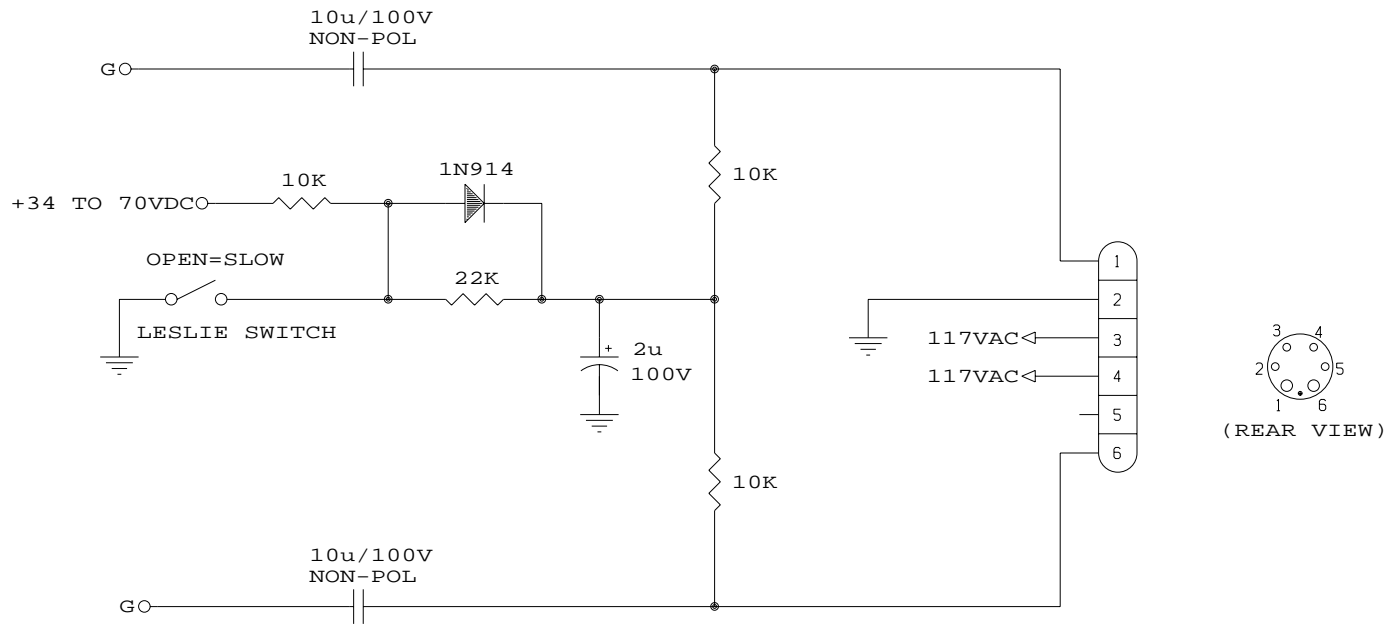


# 122/142 LESLIE SWITCHING CIRCUIT



These components are normally located in the case of a B3/C3/A100/RT3. The circuit is intended to provide speed control switching for 122/142 style balanced input Leslie amplifiers. The circuit was ripped off of the output portion of the Trek II solid-state preamp.

Title		
122/142 B3 TO LESLIE ADAPTER/SWITCH		
Size	Document Number	REV
A	--- --- ---	1.0
Date:	March 13, 1996	Sheet          of