

11.

A quick upward and downward rolling motion over the lower octave of keys with the flat of the hand accomplishes the effect. Do not play too low but experiment until the range which produces the best result is found. The lowest G is a good place to start on.

i. e.



A sudden crescendo with the Swell Pedal as indicated in the above example, is important; the best result will be obtained by opening the Swell Box from entirely closed to full open and back.

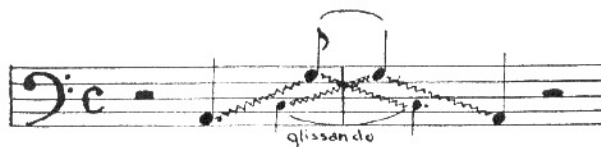
COW'S MOO

Tibia 8'
St. Diapason 8'
Flute 8'

Although opportunities for employing this imitation are not frequent, when a chance does present itself it can be made most effective and is certain to attract the attention of the audience.

Practically the same procedure as was described for the Lion Roar imitation is used for this effect. The rolling motion of the hand should be somewhat slower and the top notes held a trifle longer. It may also be advisable to play a shade higher.

i. e.



Note that the downward movement of the hand in this case should be slightly more rapid than the upward motion and that a longer pause is made on the top notes.
