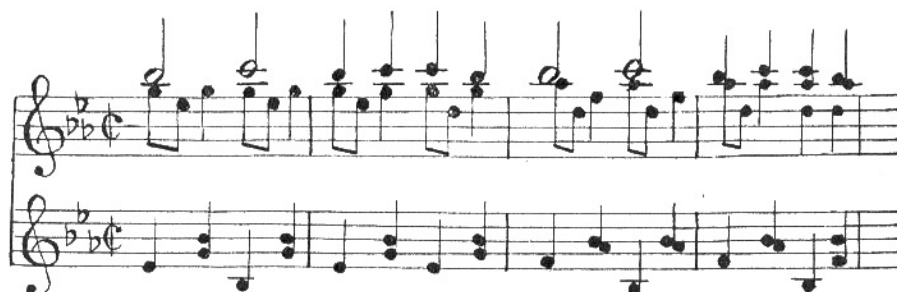


The following strain is an example of the style of accompaniment which is most appropriate for this imitation.



Practically any popular melody of either 3 4 or 4 4 measure can be treated in a similar manner and the same effect obtained. Play a little faster than the usual Fox-Trot or Waltz tempo.

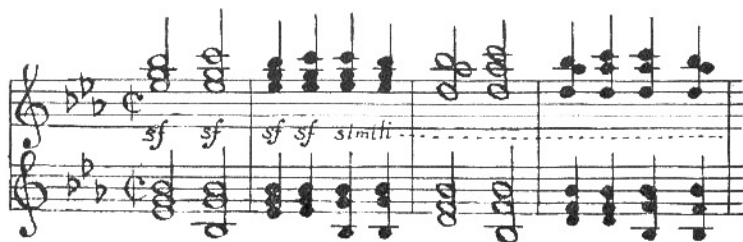
ACCORDION-HARMONICA

Strings 8' & 4'
Flute 8'

The main factor for producing either of these effects is the proper use of the Swell Pedal. The music used must necessarily be suggested by the scene to be accompanied and practically any song or popular number will be found suitable for use with these imitations.

Play with both hands in the upper register and leave out the pedal bass as in the Hand-Organ imitation. Every melody note should be harmonized (i. e. a full chord struck for each note of the air) with tonic and dominant chords only when possible.

i. e.



Play in a very legato style and accent each chord by an exaggerated sforzando or sudden opening and closing motion of the Swell Pedal. This produces the wheezing effect characteristic of both instruments.