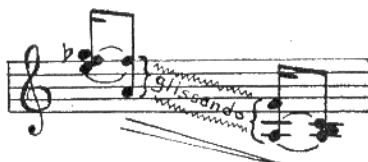

With the flat of the hand, strike a "handful" of several keys in the upper register (about two octaves above middle C) and immediately slide the hand down across the keyboard in glissando fashion for about an octave. The attack should be made with a rolling motion of the hand, the idea being not to strike the whole handful down at once but rather to add more as the glissando is commenced.

i. e.



It is best to have the Swell Box entirely open but a slight decrescendo should be made simultaneously with the glissando for the best result.

This effect need not necessarily be used only in scenes where a person is shown yelling or screaming but may also be employed to good advantage accompanying comedy "falls", blows and sudden surprise or fright.

THE KISS

Bird Whistle

The success of this imitation depends largely on having a good Bird Whistle Effect on the organ and on using great discretion in the choice of scenes in which to use it. That there must be a tinge of comedy in the situation goes without saying but in many Slapstick Comedy scenes it is useless to use this imitation as the "kiss" will not be heard if the house is noisy and such is usually the case during a comedy of this sort.

To produce this effect, press the Bird Whistle piston just a little longer than enough for it to sound. The Swell pedal should be wide open and a slight pause should be made in whatever piece is being played a few seconds before producing the kiss. Do not attempt imitating a long drawn-out kiss; the effect in this case will be entirely lost.
