

---

---

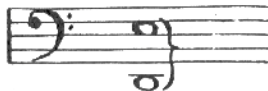
### THUNDER and RAIN STORM

Man. Strings 8' & 4'  
Ped. Bourdon 16'  
Open Diapason 16'  
or Diaphone 16'

Very frequently short flashes of rain and storm scenes occur when it is practically impossible to cue in appropriate descriptive music. These instances may be admirably covered by this imitation.

The rain effect is produced by holding down as many keys in the bass register as can be covered by the flat of the hand held lengthwise.

i. e.



The Swell Pedal should be closed but slight crescendoes should be made at intervals by quick opening and closing touches.

Only the very thin scale string stops such as the Violins 8' and 4', Viol Celest and Viol d'Orquestre should be used in the combination.

The thunder effect is easily produced by depressing several of the lowest pedal keys. Many organists simply use the Tympani Roll effect provided on some instruments but this method although easier does not result in as realistic an imitation of thunder as the method previously described.

---

### STEAM WHISTLE

Open Diapason 8'  
Tibia 8'  
St. Diapason 8'  
Flutes 8' & 4'

Some modern theatre organs are now equipped with a special Steam Whistle effect but in many cases it is not powerful enough to be heard above an ff Agitato or Hurry, or during a lively comedy when the house is likely to be noisy. In such instances or when the organ entirely lacks a Steam Whistle effect, this imitation will be found very useful.

---

---